

Uniface 10: What's happened since the release?

(Original creator: miketaylor)

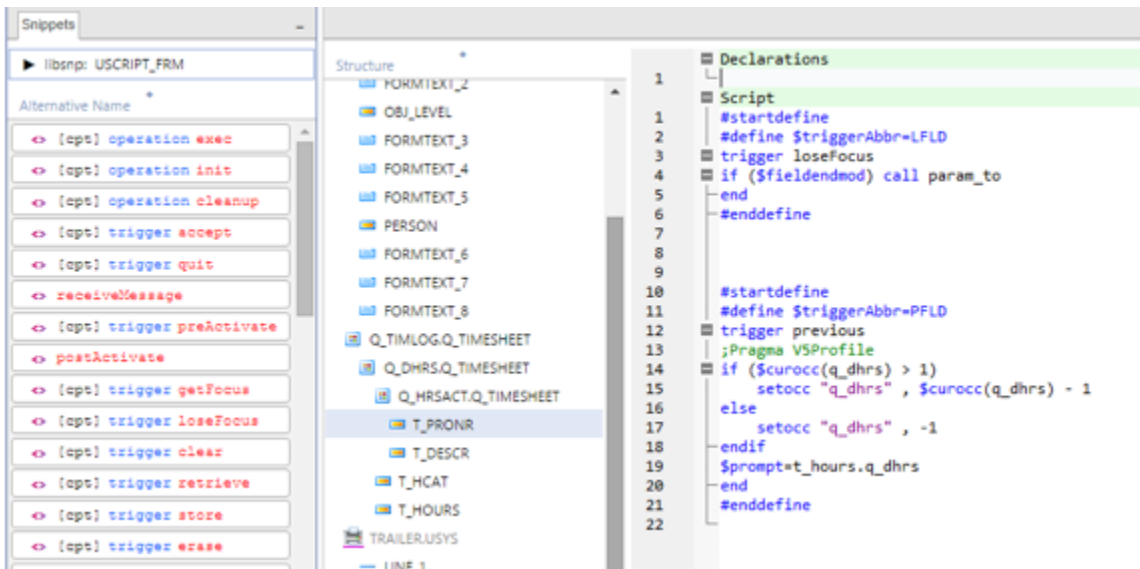
Back in September 2016 we had quite a major event, Uniface 10 was released with the ability to develop and maintain all forms of Uniface applications – Client Server, Web and batch.

UNIFACE 10

Since the release, and based on lots of feedback from the early adopters, we have continued to actively enhance the IDE with constant incremental improvements. In this blog post, I would like to share with you what these improvements are as well as what we have planned for the near future. To start, it is probably a good idea to give some high-level topics we have been concentrating on.

Migration

This topic has probably been our primary focus during the continuous updating of v10. We have always had a migration path between Uniface versions automating any updates needed. In version 10 we continue with this concept and as information becomes available, from customers and our own experiences, the migration utilities have been updated to further improve the experience.



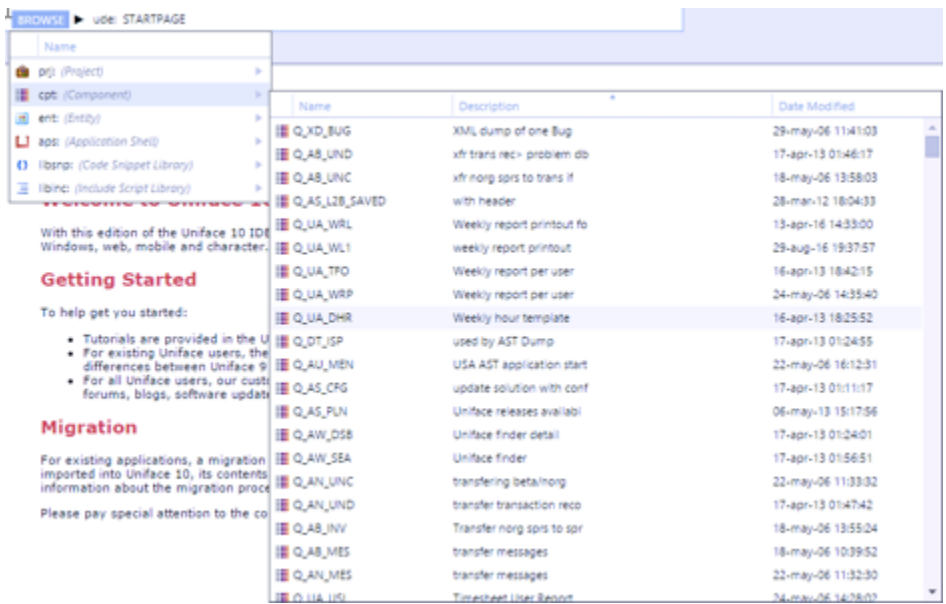
The screenshot displays the Uniface IDE interface. On the left, a 'Snippets' panel shows a list of code snippets under the category 'libsnp: USSCRIPT_FRM'. The main editor area is split into two panes. The left pane shows a 'Structure' view with a tree of objects including FORMTEXT_2 through FORMTEXT_8, PERSON, Q_TIMLOG_Q_TIMESHEET, Q_DHRS_Q_TIMESHEET, Q_HRSACT_Q_TIMESHEET, T_PONR, T_DESCR, T_HCAT, T_HOURS, and TRAILER_USYS. The right pane shows a code editor with a script. The script includes declarations for 'LFLD' and 'PFLD', and a 'Script' section with logic for handling 'loseFocus' and 'previous' triggers, including a loop for 'q_dhrs'.

```
1  Declarations
2  |
3  |   Script
4  |   |
5  |   |   #startdefine
6  |   |   |   #define $triggerAbbr=LFLD
7  |   |   |   trigger loseFocus
8  |   |   |   if ($fieldendmod) call param_to
9  |   |   |   end
10 |   |   |   #enddefine
11 |   |
12 |   |   #startdefine
13 |   |   |   #define $triggerAbbr=PFLD
14 |   |   |   trigger previous
15 |   |   |   ;Pragma VSPProfile
16 |   |   |   if ($curocc(q_dhrs) > 1)
17 |   |   |   |   setocc "q_dhrs", $curocc(q_dhrs) - 1
18 |   |   |   |   else
19 |   |   |   |   setocc "q_dhrs", -1
20 |   |   |   |   endif
21 |   |   |   $prompt=t_hours.q_dhrs
22 |   |   |   end
23 |   |   |   #enddefine
```

Uniface 10: Code migrated from 9 to 10

Usability and bug fixing

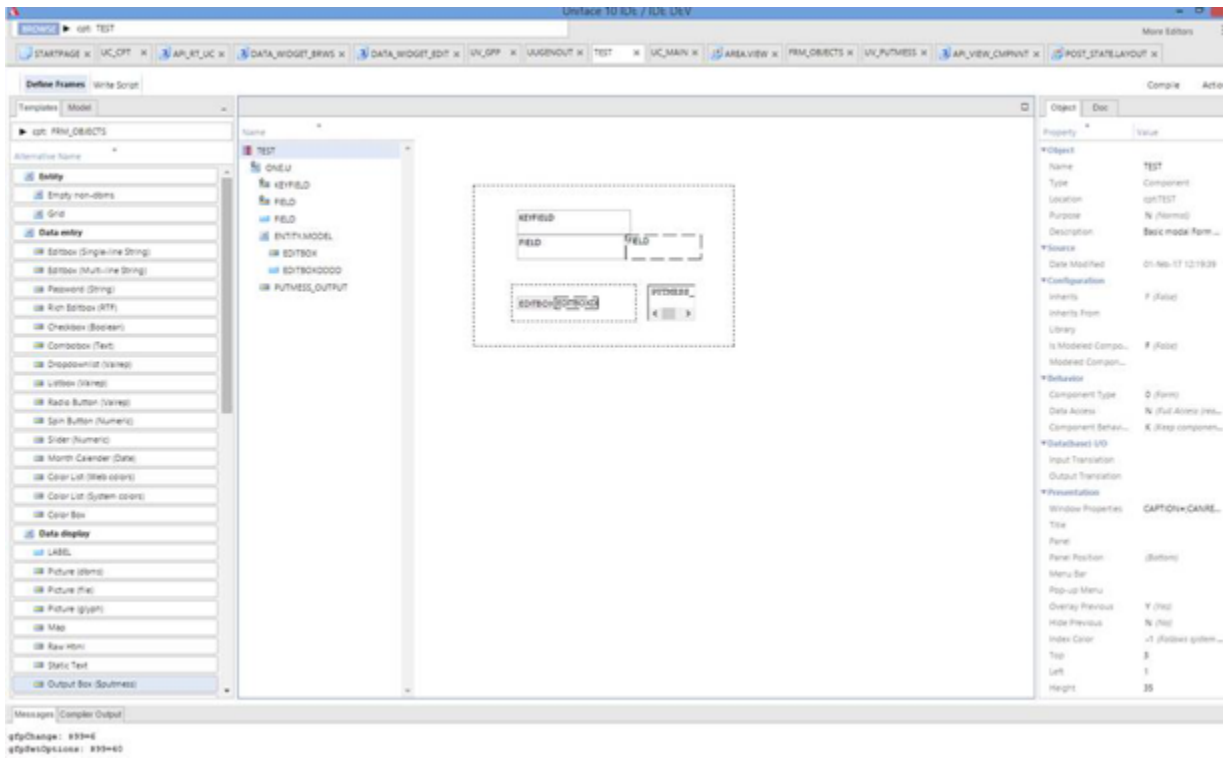
Performance in large repositories has proven to be an area where we have needed to pay attention and has generated some lively discussions on uniface.info. Although this is an ongoing theme we have already made significant enhancements. The dropdown browse dialogs for the Development Objects (cpt:, ent:, libinc:, etc) will load the information and format the data with considerably less of a delay. Incremental rendering has also been added so that the list becomes available and usable even while extra rows continue to be added. The same techniques and improvements will also be added to the resource browsers in the coming patches.



Uniface 10: Cascading browse dialogs

Embedding the GUI screen painter

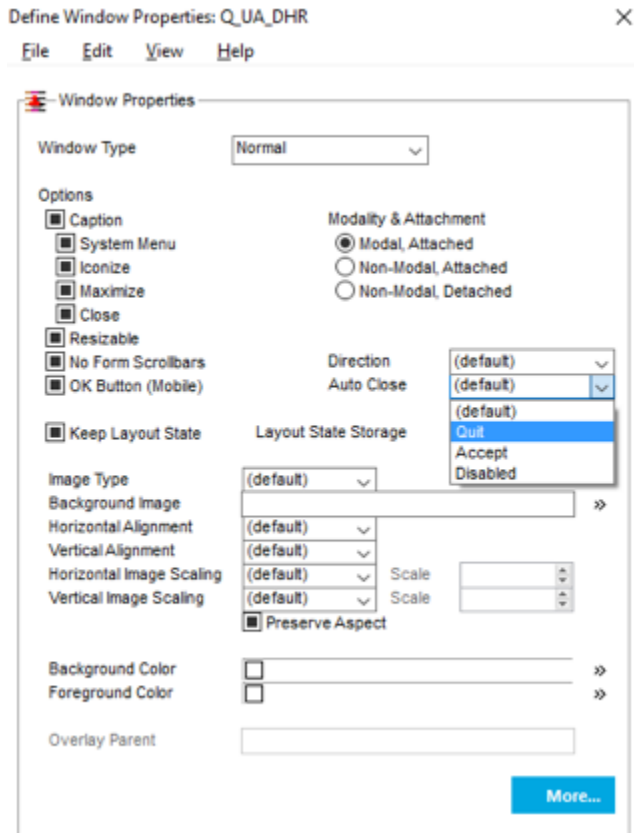
Client server development is another area we are enhancing. The first enhancement we are planning and currently working on is embedding the form painter directly into the v10 IDE.



Uniface 10: Embedded form painter taken from a developer's PC

Runtime enhancements

It is now possible to specify what trigger, accept or quit, will be called when an auto close popup loses focus. The ability to undeclare a trigger, operation or local proc. This will allow model or previously defined scripts to be excluded from the compile effectively allowing default functionality for a trigger to be re-established. The ability to call up to a higher-level trigger has been added, this allows such actions as explicitly calling the entity level Detail trigger from the field level detail trigger.



Uniface 10: New popup options

As you can see, we've been very busy, and there is a lot more to come.